



CROATIAN FEDERATION OF SPORT FISHING ONE SEA



XXVII SPEARFISHING WORLD CHAMPIONSHIP CMAS

Mali Lošinj
September 14th to 19th 2010.



PARTICULAR RULES



XXVII. SPEAR FISHING WORLD CHAMPIONSHIP CMAS

CROATIA 2010

PARTICULAR RULES

The world Confederation of Underwater Activities (CMAS) delegates the Croatian Federation of Sport Fishing on Sea (HSSRM –CFOSA) ,the organization of the XXVII. SPEAR FISHING WORLD CHAMPIONSHIP CMAS, which will take place between September 14, and 19, 2010, in Mali Lošinj, Croatia.

Participation in the World Championship

The Countries allowed to participate in the World Championship are:

a) From **Euro African Zone:**

Croatia (Organizer)
Spain
Italy
Algeria
Portugal
Greece
Bulgaria
Ukraine
Finland
Russia
Turkey
Slovenia
South Africa
San Marino
UK and Peru (stand by)

b) From **Pan America Zone:**

Brazil
Chile
USA
Venezuela

c) From **Pacific Zone:**

Australia
New Zealand
Tahiti

Applications to participate in the 2010 Championship

Applications to participate in the World 2010 Championship must be completed using the special forms, according to the Rules:

- a) Each Federation must confirm its participation with the CMAS (appendix A) at least 4 months before the beginning of the championship accompanied by its CMAS certification together with required championship fees, with copies to the organizing federation. Deadline : May 14, 2010.
 - b) The form (appendix B), which includes the team and officials' names, must arrive at the CMAS (with a copy to the organizing Federation), 30 days (closing date) before the beginning of the competition. Deadline : August 14, 2010.
- Each National Representation can consist of:

- **Competitors : three (3) maximum**
- **1 (one) Substitute**
- **1 (one) Team Captain**
- **1 (one) Doctor**

The teams have to follow the CMAS Rules and the timetable, otherwise any team which does not follow these Rules, will be **completely forbidden from participating**.

Remark: The representatives from each Country **must be at least 18 years old** and have the same nationality as the Countries they have qualified for the Championship .

Registration:

The registration form should be sent to the following e-mail address: **srd.udica@ri.t-com.hr** tel/fax:00 385 51 233 046, or by mail **SRD „Udica“ ,Škverić bb ,pp 62, 51550 Mali Lošinj, Croatia** within the deadline according to the CMAS Rules (see the Athletes registration to the CMAS Championships).

WEB : www.udica.hr

Contact person: Mr.Milan Mužić mob. 00385 98/ 384287
Mrs. Petra Mašće ,mob. 00385 98/ 9867541

The prices of inscription for National Representation:

Private boats of Federations will be accepted and welcome by CFOSA. As a result Participation Fee is differentiated as follows:

Inscription fee with full accommodation is 3.300 € (550 € per person)
Inscription fee without accommodation is 2.400 € (400 € per person)

There is an additional discount of 200 € for those competitors using their own boats.

The deadline for payment of inscription fee is June 30,2010.

3.

The cost for accompanying persons:

- 1/2 (double bed room),full board, per person/day 50 €

Transportation will be provided from the hotels „Aurora“ and „Vespera“ to the competition sites and events only for those registered.

Those members of any team that do not register will not avail of any benefit from the organization.

The bank and account number:

SRD „UDICA“ Mali Lošinj
Škverić bb
51550 Mali Lošinj,Croatia

Hypo Alpe-Adria-Bank d.d.
Slavonska avenija 6
10000 Zagreb,Croatia
A/C : 2500009-1101310078
IBAN: HR78 2500 0091 1013 1007 8
BIC: HAABHR22

Presentation and accreditation

The competitors will have to be presented before 18,00 h on September 14,2010 at reception of the hotel „Aurora“ in order to proceed with their accreditation.

Competition

- The competition will proceed on 17 and 18 September 2010 over two (2) consecutive days of 5 hours each ,on a maritime zone described in the appendices and the charts.
- The sequence of use of the zones of competitions will be decided each day according to weather conditions.
- One day of the competition will be considered valid only if the time passed from the beginning of the competition is at least two thirds (2/3) of the duration envisaged,
- Only the CMAS judge will be able to decide on a partial or total cancellation.

Official boats

- The official boats can be privately owned boats of the Federation which have been reported during registration of teams. Limited power is 100 HP.
- The CFOSA (Croatian Federation of Sport Fishing on Sea) will provide an official boat for those competitors who arrive without their own boat. If possible, CFOSA will provide one more boat for each captain.
- Each official boat (competitor) will be assigned an official number for the duration of the competition.

4.

The equipment allowed

- One or more spear guns, working with an elastic cord or compressed-air, loading only by muscular force of the competitor, no other means of unspecified methods are acceptable.
- Fins, Face masks ,gloves, underwater glasses, snorkel, weight belt, spear guns, hooks, knives, protective clothing, watches, depth gauges, buoys, fishing, board equipped with a compass, underwater lamps, and GPS,etc.
- The use of an official buoy of 10 liters minimum volume is compulsory.

It is forbidden to:

- Carry fish anywhere but on the official buoy or in the boat.
- Have the spear guns loaded on the boat.
- Have the spear guns loaded and hanging on the buoy.

The Zones of the competition

- The World championship will take place during two (2) 5 hour days in Mali Lošinj aquatorium. For the World championship there are 2 zones for the competition and 1 zone as reserve.
- The competition and reserve zones with nautical coordinates are shown on the accompanying maps.
- The members of the teams can visit the zones two weeks before the championship, but the use of spear guns, scuba diving equipment and underwater scooters, within the zones is forbidden.
- The Competition Zones will be closed for the competitors, the captains and any underwater diver, the day before the championship i.e starting from 0,00 hrs on September 17,2010.
- The duration of the Championship will be 5 (five) consecutive hours each day.
- The beginning and the end of the competition will be marked by sounding signals of great intensity and also by visual means- rockets.
- Only the International Judge and the Director of the Competition can decide by mutual agreement, the Change of the Competition Zone, due to bad weather or for any other case of absolute necessity. In the event of disagreement, the Head of Judges imposes his decision.
- The Competition Zones and the Reserve Zone can be used only once.
- In the case of one-day cancellation, the Championship will be valid.
- If the Competition has to be stopped due to bad weather or for any other situation of absolute necessity, it will be considered valid,if the time passed from the beginning, is at least two thirds (2/3) of the duration planned for that day of Competition.
- Only the International Judge and the Director of the Competition can decide by mutual agreement, on the interruption or cancellation of the Competition. In the event of disagreement ,the International Judge imposes his decision.
- During the course of the Competition, only the official boats and those duly authorized by the International Judge ,on the proposal of the Organization, can be present in the Competition Zone.

5.

Point calculation and valid species

The point calculation of each competitor after each day will be as follows:

Non valid kinds of species

Drozd green wrass (Labrus viridis)- the capture is prohibited by National Legislation

The capture of these fish is allotted without any point:

- Drhtulja - marbled electric ray (torpeda mormorata risso)
- Golub - sting ray, eagle ray- all kinds of dasyatis pastinaca
- Raža - all kind of rajidaes
- Pas - all kind of sharks (selacea)

Phase1: Traditional pointing

Group I.:

In this group are: **The conger and moray**. Minimum weight is 2.500 grams..Each catch over the minimum weight is allotted 1.500 (1000+500) points , regardless of weight. .Limited quantity is 10 (ten) catches, adding these two species.

Group II.:

Is one point per gram for each valid catch.The maximum weight taken into account is 12,5 kilos.

The minimum weight by species is detailed in the table:

	Quantity	Minimum weight	Bonus
Kirnja – grouper (Epinephelus marginatus)	1	3.000	500
Gof – amber jack (Seriola dumerili)	10	2.000	500
Lica - leer fish	10	2.000	500
Palamida – atlantic bonito (Sarda sarda)	10	2.000	500
Other fish	10	500	500

The number of catch authorized for each species will have to be respected. If the number of competitors' fish is higher than that authorized, the surplus will be removed (always the heaviest) and the competitor will be penalized with the equivalent of the bonus per piece.

6.

Each valid piece will have a bonus of 500 points according to the table. Each piece that does not reach 2/3 of the minimum weight for its category will generate a penalty, according to the minimum weight in the equivalent of the bonus of the capture of this species.

The individual score will be equal to the sum of the weight of the valid species plus bonus by catches ,less penalties.

Phase 2.: Pointing expressed as a percentage

- The classification of each day of competition will be made. The score of each competitor will then be transformed to a percentage, by calculating in percent, the score of each competitor, compared to the score obtained by the winner.
- The competitor ,who will have obtained the best score, will be allotted 100 percent. The following competitors' scores will be calculated to a percentage of the winner to the third decimal point.
- Formula : **Score of the day x 100/ Score of first (competitor)**
- The individual final classification will be given by adding the scores, expressed as a Percentage ,for the two days.
- The final classification for Nation will be given by the scores, expressed as a percentage for the two days of all the Athlete participants of each country.
- In the event of equal result the winner will be the competitor who will have the higher number of valid catch.

On the total of the 2 tests, if equality remains, this will be the winner-the competitor with the heaviest catch obtained in the 2 competitions, excluding congers and morays.

Competition Discipline

- All members of the registered teams are obliged to know and respect the rules of the Competition.
- At all times the judges have the authority to intervene should the rules not be respected.
- The judges can implement sanctions with:
 - a) Warning
 - b) Exclusion
- Two warnings, in the same competition, will be immediate disqualification.
- The Judge must inform the competitor of the infringement once it is official.
- Once the action is taken, the Judge must inform the International Judge.
- If the competitor who receives the warning has already another warning the International Judge will order his immediate disqualification.
- The disqualified competitor loses all rights to the classification in the Competition.

Infringements punishable by warning

- To arrive late at the control points planned by the Organization.
- For incorrect behavior towards other competitors or the Judges.
- To move away more than 25 meters from his official buoy.
- To load or to maintain his spear gun in load position on the ground or on the support boat.

7.

- To have a means of signal indication not in conformity with the Rules.
- Non declaration to have caught the total number allowed for a certain species of fish, as stated in the Particular Rules.
- To fish outside of the permitted area.
- To have obtained help to recover the buoy or the mobile ballast.

Punishable Infringement with disqualification

- Aggression towards other Competitors ,the Judges or the Members of the Organization.
- To fish species prohibited by the National Legislation defined by the Organizing Country.
- Replacement of the catches of the regulated species.
- To be in the Competition Zone, before the Official starting date and time.
- To use any type of scuba diving or breathing apparatus.
- To return after the finishing time for the end of the competition.
- All those who have committed offences before the beginning of the competition will not be allowed to take part in the competition.

Complaints

- Each participating team has the right to place any complaint to the jury.
- Only the captain of the team will present a complaint.
- Any complaint will have to be accompanied by guarantee; the amount is fixed by CMAS
- A complaint must be presented in writing ,in French, English or Spanish to the Judge Referee:
 - Before the weighing for those matters arising during the competition.
 - During the weighing for those matters regarding the weighing and concerning the weighing itself.
 - With regard to an error in the classification, the presentation for a complaint must be made to the Judge referee within 15 minutes following the publication of the classification and accompanied by the payment of the necessary financial guarantee of 100 € (This procedure will cause immediate delay in the protocol ceremony for the presentation of the medals).
 - The time to prepare and present a complaint :the plaintiff will have 60 minutes deadline to write and present his report to the International Judge. Failure to meet the deadline to complain will be regarded as invalid with the loss of the guarantee.
 - The complaint will be declared inadmissible if these conditions are not met.
 - If the complaint is successful, the guarantee in cash will be returned. If unsuccessful, the guarantee in cash remains with the CMAS

REGULATORY CONTROL

The international Judge

- For CMAS Championships the International Judge is nominated by Spear Fishing Commission and ratified by the CMAS A.C. He has full control and authority over all the officials. He must approve their assignments and give them instructions with regard

8.

to the Particular Rules relating to the competitions.

- His mission is:

- a) The inspection of the installations being used for the competition
- b) The examination of the individual files of the participants and the booking cards
- c) The assignment, by drawing of lots, for the commissioners as well as their boats
- d) To sign the final classifications before the publication of the results

- He must apply the Rules and the decisions of CMAS and solve all the questions concerning the effective organization that is not referred to in the Specific Competition Rules

- He must ensure that all Officials necessary for the good work of the competition are at their respective stations. He can nominate substitutes to replace the absent ones including those who are not in a fit state to fulfill their tasks or those who are inefficient. He can also nominate additional officials if he considers it necessary

- He authorizes the responsibility to give the starting signal after having been ensured that all the members of the College of Judges are in place and ready

- The Judge Referee has the right to cancel or suspend the competition, even without the opinion of the International Jury, in the event of unfavorable weather conditions or if the place of competition or the installations do not fulfill the requirements of the Rules

International jury

- It is an individual Body, composed of only one member, the Judge Referee, nominated by CMAS and proposed by S.F. Commission.

- The mission of the jury is to examine all received complaints and to rule on those within the hour that follows the complaint procedure.

- If a member of the international jury is of the same nationality as one of the points in Question ,the member will be replaced by one of the substitute members

- The decisions of the International Jury are without appeal, except if the jury is informed of a new element

- The decisions must be communicated in writing to the person concerned immediately after the closure of the meeting

- The CMAS delegate will act as secretary of the meeting without voting rights

- The International CMAS Judge acting as International Jury will be assisted upon request by a Competition Committee, composed of Director of Competition, and three (3) team captains, non competitors, designated by the International Judge among those participating in the Technical Meeting.

- Functions and responsibility of the Competition Committee are exclusively to provide experienced advice to International CMAS Judge upon his request, without any freedom to take decisions, with the only exception of disability of CMAS Judge, in which circumstance the Competition Committee will ensure the minimum decisions to guarantee completion of competition or, if required, for any circumstance such as adverse meteorology, suspension of competition/day competition.

Rules interpretation

The CMAS International Rules for underwater fishing competition will be applied for non contemplated cases in these particular rules.

Anti doping control

The anti-doping controls will be done according to the decision of the HADA (Croatian anti-doping agency member of WADA –World anti-doping agency)

Responsibility

The World Confederation of Underwater Activities (CMAS), and the Organizers, as well as their Representatives and Collaborators, the Director of the Competition and the Judges, cannot be held responsible for the damage which could be caused with the materials and with the goods for the participants, nor for the accidents which could occur with the competitors and other participants, as result of their inscription in the Spear Fishing World Championship – Croatia 2010.

10.

ACTIVITIES PROGRAM

From the 14 to the 19, September 2010
Mali Lošinj, Croatia

Tuesday, September 14

13,00 hrs. Arrival- inscription and accreditations
19,00 hrs. Dinner

Wednesday, September 15

07,30 hrs. Breakfast
13,00 hrs. Lunch
17,00 hrs. Opening Ceremony
19,00 hrs. Dinner
20,00 hrs. Tehnical Meeting (Captains' Meeting)

Thursday, September 16

07,30 hrs. Breakfast
Free day
19,00 hrs. Dinner

Friday, September 17

07,00 hrs. Breakfast
08,15 hrs. Transport from hotels
09,00 hrs. Leaving for fishing area
10,00 hrs. Start of competition (Day one)
15,00 hrs. End of competition
17,30 hrs. Weighing
20,30 hrs. Dinner

Saturday, September 18

07,00 hrs. Breakfast
08,15 hrs. Transport from hotels
09,00 hrs. Leaving for fishing area
10,00 hrs. Start of competition (Day two)
16,00 hrs. End of competition
17,30 hrs. Weighing
20,00 hrs. Final resultats – awards presentation
Closing ceremony

Sunday, September 19

07,00 hrs. Breakfast
Departure



**Spearfishing Championship
 Out of CMAS Games
 Registration
 Version 2007/01**

!!! To send to CMAS HQ 3 months at least before the opening of the championship !!!

Kind of championship and discipline

Name of the Continent / Zone	YES	NO
World		
Continental		
Zone		

Name, date and place

N° and name of the Competition _____
 Country _____ City _____ Dates from _____ to _____

I undersigned _____

Representative of the Federation _____

Position _____

1. authorizes the athletes and members of the above federation to participate to the here above mentioned championship
2. certify that the 2007 annual due fees for the affiliation to the Sports Committee and the Spearfishing commission have been paid
3. certifies that these athletes are fit to participate at this championship and this according to the current laws of our country as concerns medical control of athletes.
4. certifies that the list of names of the athletes who will take part at the championships will be registered through CMAS site within and not later than 30 days before the date fixed for athletes' entries on competition venue and it accepts to pay 25 Euro per athlete if this list will not be completed via CMAS site
5. certify that all participating athletes will own a valid Spearfishing sports license.
6. pay today to CMAS the participation fees for this championship::

World championship **92.00 EUR** Continental or Zone championship **62.00 EUR**

By cheque _____

By bank transfer _____

By Credit cards _____

CMAS AccountFortis Banque – Agence de Smet de Naeyer
 Rue des Dêmeineurs, 29 - 1090 Bruxelles - Belgique
 Code IBAN **BE39 2100 4854 5219** Code SWIFT / BIC **GEBABEBB**

Date	Signature	Stamp of the federation
_____	_____	_____

In case of payment by credit card

Name	Name of the card holder	N°	Expiry date
American Express _____	_____	_____	_____
Master Card _____	_____	_____	_____
Visa _____	_____	_____	_____

Signature _____



Purchase order Sports Licences

Validity 1 year (365 Days)

SPEARFISHING

Viale Tiziano, 74 - 00196 - Rome - Italie

Tél: + 39/06/36 85 84 80 Fax: + 39/06/32 11 05 95 E_Mail: tec@cmas2000.org

Bank

Générale de Banque

Agence de Smet de Naeyer

Rue des Démineurs, 29 / 1090 Bruxelles / Belgique

IBAN Code: BE39 2100 4854 5219

Swift: GEBABEBB

Name of the Federation

Shipping address

Zip

City

Country

Phone

Fax

Ref

E_mail

Date

	Name	First Name	Sex	Citizenship	Birthday
1					
2					
3					
4					
5					
6					
7					
8					
9					
10					
11					
12					
13					
14					
15					
16					
17					
18					
19					
20					
21					
22					
23					
24					
25					
26					
27					
28					
29					
30					

Number of licences

X 4,5 EUR =

0,00 EUR

Payment by

Cheque

Bank

Credit Card

Credit Card

Card	Name of the card holder	N° of the card	Expiry date
American			
Master			
VISA			

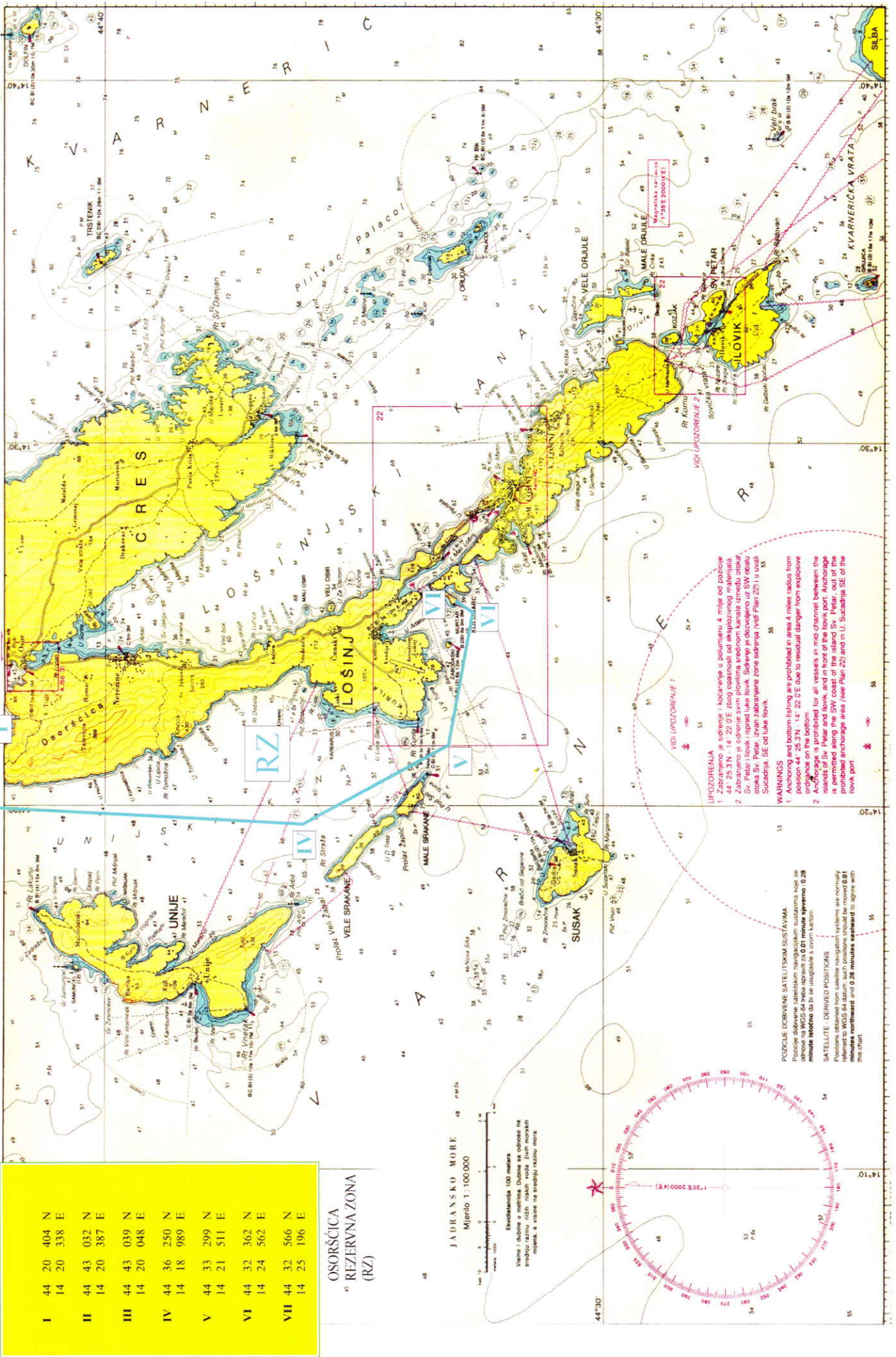
Date

Name

Send to tec@cmas2000.org

THE ZONES FOR THE COMPETITION

III

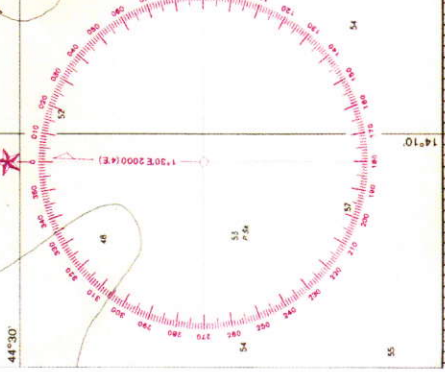


I	44 20 404 N
	14 20 338 E
II	44 43 032 N
	14 20 387 E
III	44 43 039 N
	14 20 048 E
IV	44 36 250 N
	14 18 989 E
V	44 33 299 N
	14 21 511 E
VI	44 32 362 N
	14 24 562 E
VII	44 32 566 N
	14 25 196 E

OSORŠICA
REZERVNA ZONA
(RZ)

JADRANSKO MORE
Mjerilo 1:100 000

Ekvivalencija 100 metara
Valne i dubine u metrima. Dubine se odnose na srednju razinu niske morskog voda. Žutih morskih mjesta, a visine na srednju razinu mora.



POZICIE DOBIVENE SATELITSKIM SUSTAVIMA
Pozicije dobivene satelitskim navigacijskim sustavima koje se odnose na WGS 84 treba spremiti za 0,01 minute sekunde 0,28 minute istočno da bi se usaglasile s crnom kartom.

SATELITE - DERIVED POSITIONS
Positions obtained from satellite navigation systems are normally referred to WGS 84 datum; such positions should be moved 0,01 minutes northward and 0,28 minutes eastward to agree with this chart.

UPOZORENJA
1. Zabranjeno je sadrenje i kockanje u poljumu 4 milje od pozicije 44° 25' 31" N - 14° 22' 0" E zbog opasnosti od eksplozivnog materijala.
2. Zabranjeno je sadrenje svim plovnim sredstvom kanala između otoka Sv. Petar i Ilovik i ispod Iula Ilovik. Sadrenje je dozvoljeno uz SW obalu otoka Sv. Petar, zvan zabranjena zona sadrenja (vidi Plan 22) i u luči Sucadnjač, SE od Iula Ilovik.

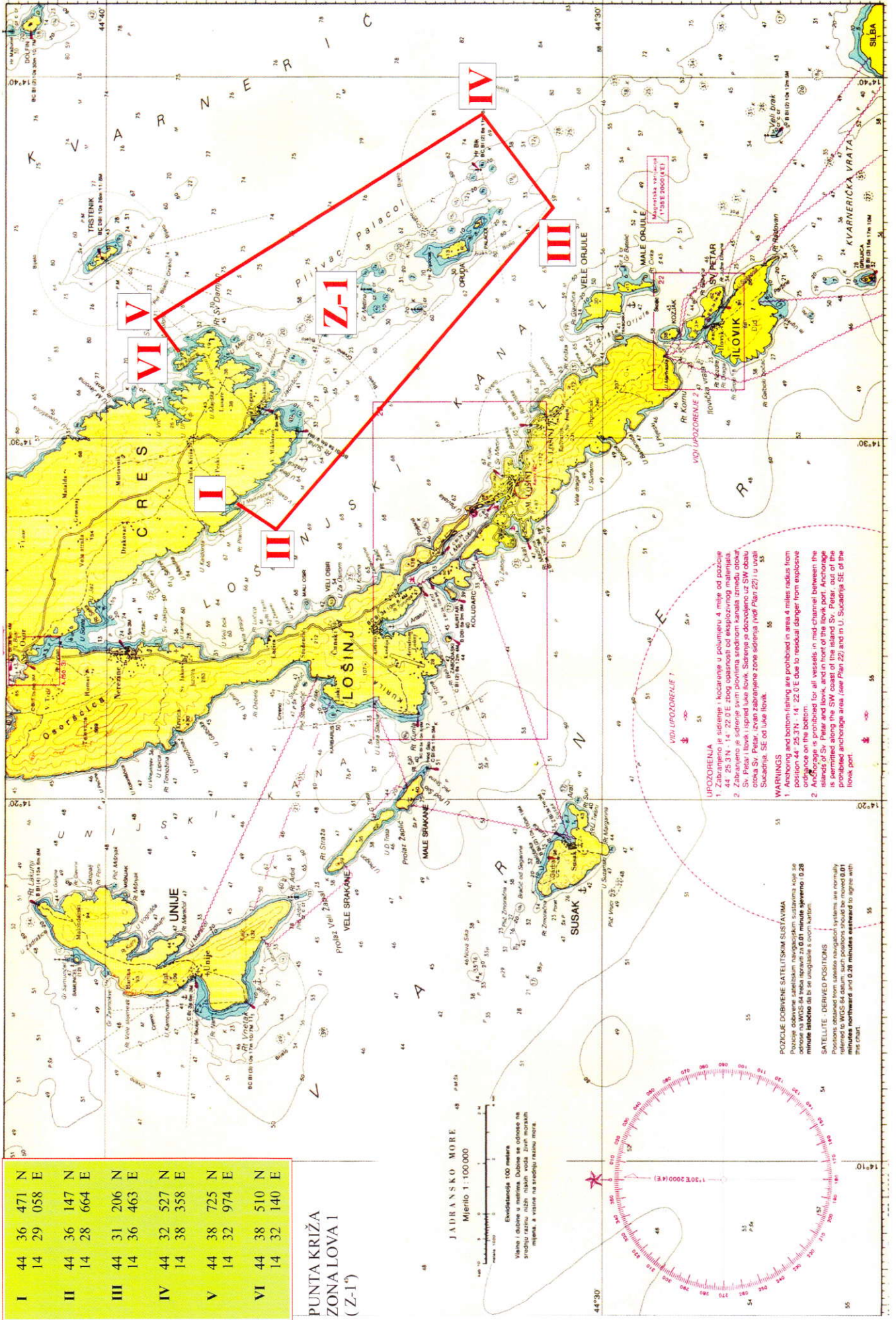
WARNINGS
1. Anchoring and bottom-fishing are prohibited in area 4 miles radius from position 44° 25' 31" N - 14° 22' 0" E due to residual danger from explosive material on the seabed.
2. Anchoring is prohibited for all vessels in mid-channel between the islands of Sv. Petar and Ilovik, and in front of the Ilovik port. Anchoring is permitted along the SW coast of the island Sv. Petar, out of the prohibited anchorage area (see Plan 22) and in U. Sucadnjač SE of the Ilovik port.

THE ZONES FOR THE COMPETITION

ZONE I

I	44 36	471 N
	14 29	058 E
II	44 36	147 N
	14 28	664 E
III	44 31	206 N
	14 36	463 E
IV	44 32	527 N
	14 38	358 E
V	44 38	725 N
	14 32	974 E
VI	44 38	510 N
	14 32	140 E

PUNTA KRIZA
ZONALOVA I
(Z-1^o)

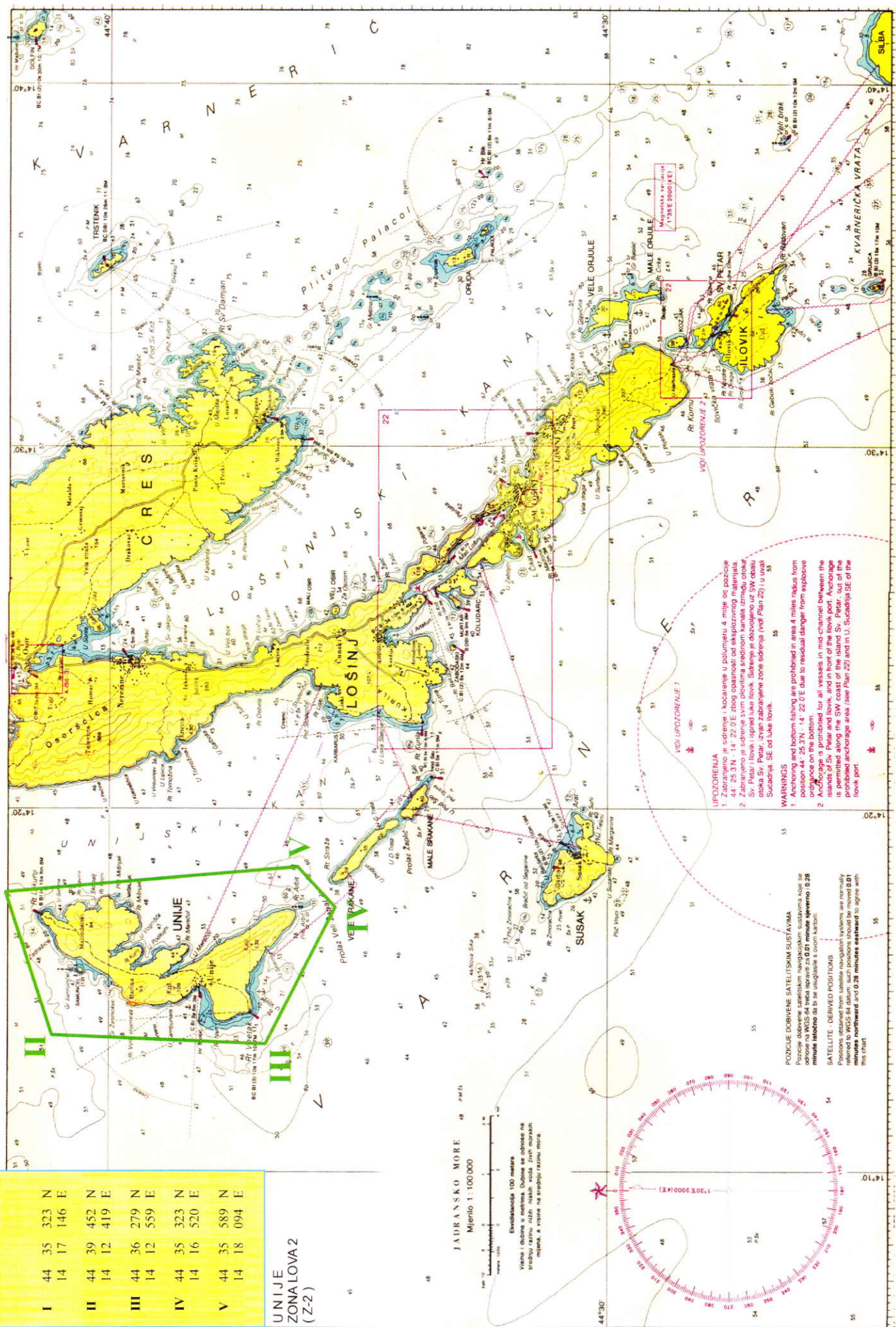


ZONE II

I	44	35	323	N
	14	17	146	E
II	44	39	452	N
	14	12	419	E
III	44	36	279	N
	14	12	559	E
IV	44	35	323	N
	14	16	520	E
V	44	35	589	N
	14	18	094	E

UNIJNE ZONA LOVAZ (Z-2)

THE ZONES FOR THE COMPETITION



UPOZORENJA

- Zabranjeno je sidrenje i kocičenje u polumjeru 4 milje od položaja 44° 25'31" N - 14° 22'00" E zbog opasnosti od eksplozivnog naljeznjaka.
- Zabranjeno je sidrenje svim plovnim sredstvom kanala između otokova Sv. Petar i Lovik i sjeverno od otoka Sv. Petar. Sidrenje je dopušteno uz SW obalu otokova Sv. Petar, tovar zabranjeno zone sidrenja (vidi Plan 22) i uvali Susednja, SE od otoka Lovik.

WARNINGS

- Anchoring and bottom-fishing are prohibited in area 4 miles radius from position 44° 25'31" N - 14° 22'00" E due to residual danger from explosive.
- Anchorage is prohibited for all vessels in the channel between the islands of Sv. Petar and Lovik, and in front of the Lovik port. Anchorage is permitted along the SW coast of the island Sv. Petar, out of the prohibited anchorage area (see Plan 22) and in U. Susednja, SE of the Lovik port.

POZICIE DOBIVENE SATELITSKIM SUSTAVIMA

Pozicije dobivene satelitskim navigacijskim sustavima koje se odnose na WGS 84 treba izraziti za 0.01 minute sjeverno 0.28 minute istočno da bi se uskladile s ovom kartom.

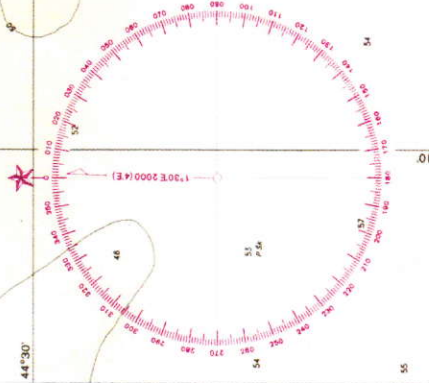
SATELLITE - DERIVED POSITIONS

Positions obtained from satellite navigation systems, are normally referred to WGS 84 datum; such positions should be moved 0.01 minutes northward and 0.28 minutes eastward to agree with this chart.

JADRANSKO MORE
Mjerilo 1:100 000

Ekvidistancije 100 metara

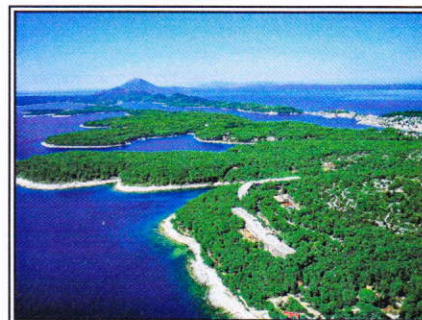
Visina i dubina u metrima. Dubine se odnose na srednju razinu mliži-nah voda. Izrič mjerinah mjesta, a ostale na interpoliranoj mliži.



ABOUT THE ISLAND

The Island of Lošinj is part of the Cres-Lošinj island group, which constitutes the western segment of the Kvarner's islands inside the Kvarner Bay. The Kvarner Bay together with that of Trieste forms the most inland point of the Mediterranean Sea. The archipelago of Lošinj comprises the Island of Lošinj and smaller islands: Unije, Ilovik, Susak, Vele Srakane and a series of smaller uninhabited islands.

The islands of this archipelago form the natural bridge between Istria and Dalmatia. It is very particular that the island is positioned right in the middle between the Equator and the North Pole, where the 45th parallel passes through the north side of the island of Cres and the biggest part of the island is in the subtropical zone of the southern half of the northern part of the Earth.



The biggest island of the archipelago is Lošinj, the 11th biggest on the Adriatic Sea, 33 km long, with the width varying from 4,75 km in the north and middle of the island, to 0,25 km near the town of Mali Lošinj. The total coastline of the island is 112,7 km.

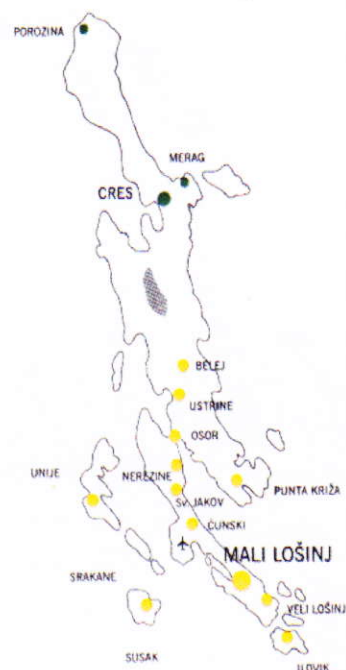
Many, many years ago the island of Cres and Lošinj were one, only after the channel of Osor was excavated, probably during the Roman period, two islands emerged. Today a bridge connects the islands and in the geographically trafficable sense they form one unit. In ancient times the islands were known under a common name of Apsyrtides.

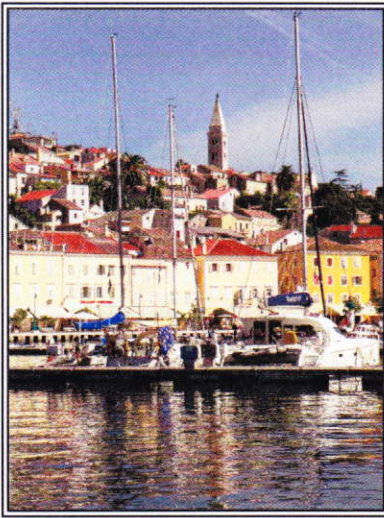
Mali Lošinj is the biggest settlement on the island, found on the southern side of the Bay of Lošinj, which thanks to this position has become a very important maritime and commercial centre, and today, also an important tourist destination.

MALI LOŠINJ

Positioned in the August Bay, the biggest closed bay of the island, and with 7.000 inhabitants, today it is the biggest island town in the Adriatic. Mali Lošinj dates back to the 12th century when twelve Croatian families settled in the eastern bay St. Martin. First Croatian settlers were farmers, later they also turned to fishing, sailing and shipbuilding, and with that the settlements moved towards the coast.

The golden age for Mali Lošinj was the end of the 19th century when thanks to seafaring the "small village" turned into a maritime town. Because of the big changes and the maritime crisis in the region, due to passing from sail boats to steam boats, it seemed that the destiny of this and similar towns was sealed. Upon discovering the health benefits of the climate, and growing of the new economic realm, tourism, a new page in the island's history was open.





Today Mali Lošinj is one of the main tourist centres on the Adriatic known in all European tourism circles, which is proofed by an ever bigger number of guest that visit the island every year.

Mali Lošinj was the recipient of the title „Champion of Tourism 2007“, and in 2009 Mali Lošinj won a silver medal in the prestigious international competition **The Golden Flower of Europe** (Entente Florale Europe).

Sports fishing has a long tradition on Lošinj, so that the first fishing-gun was brought to the island in the 1930s. Mali Lošinj has become known in the World, because of its traditional New Year Cup in spear-fishing held for 40 years in a row, while also the first World Championship in spear-fishing was held in Mali Lošinj in 1957.

On 18 July 2007, Daniel Gospić from Mali Lošinj became the European champion in underwater fishing at the Championships held in Rota, near Cadiz in Spain. Winning a gold medal, Danijel Gospić brought to the rich treasury of Croatian trophies the first gold medal won at major competitions.

GASTRONOMY

Over a hundred catering facilities operate on the Island of Lošinj, as well as the surrounding islands. Numerous restaurants, taverns, bistros, buffets and pizzerias provide a rich and diverse culinary offer of the area.

Specialties based on seafood, dishes made according to traditional recipes with the ever-present wild-growing plants and aromatic herbs, natural condiments and olive oil are the basic features of the island cuisine.

CULTURE

One feels the rich cultural heritage of the island at every corner. Churches, monasteries, Renaissance buildings, basilicas and remnants from the ancient times can be found all over the island.

An exceptionally rich art collection by Croatian artists donated by Andro Vid and Katarina Mihičić, and a collection by European artists donated by Giuseppe Piperate, are stored at the gallery in Mali Lošinj.

Kula, a museum-gallery space located in Veli Lošinj, testifies to the maritime tradition of the island. The permanent exhibition presents the rich history of Lošinj highlighting its famous maritime past. Apart from the permanent exhibition, additional space is provided for occasional art and museum exhibitions.

The discovery of the famous sculpture, presenting Apoxyomenos, a Greek athlete, which was found in 1999 in the Lošinj underwater, also testifies to the rich cultural life of the island.

HOTEL

Aurora Hotel is located in the beautiful Sunny Bay, surrounded by the blue sea and green centuries-old pine-wood. It is only 50 m far from the sea, next to the sports facilities, and a 20-minute stroll from the centre of Mali Lošinj. The Hotel is completely renovated in 2007 / 2008.

All the rooms are air-conditioned, in every room there is a telephone, Internet connection, SAT-TV, hairdryer, mini bar and a safe.

Facilities:

Buffet style hotel restaurant.

Aperitif bar containing a wide selection of drinks and cocktails, terrace overlooking the sea and pine-wood.

A la carte restaurants Veli žal, Borik and Lanterna near the hotel, by the sea.

Fitness

Wellness & Beauty Center with unique sea view!

INCLUDED FACILITIES:

- Outdoor and indoor swimming pool
- Sunbeds and sunshades - outdoor swimming pool
- Fitness

EXTRA FACILITIES:

- Sauna
- Beauty Zone
- Relax Zone
- Massage
- Towels and bathrobes
- Wellness and Fitness programme
- Beauty Product
- Solarium

HOW TO REACH US

Even though an island destination, an additional incentive is the good transportation connections with the coast, as well as the vicinity of eminent tourist markets.

Travelling by car or motor bike

Central European road connections with destinations on the Croatian coast are becoming more and more developed. During the summer months the traffic at border crossings gets heavy and may cause shorter delays. To enter and drive through Croatia you need a Green Card (the International Insurance Card) and a valid driver's license. A toll is charged on the highways and semi-highways, as well as some bridges and tunnels.

The island of Cres is connected with the land by two ferry lines. The Porozina – Brestova ferry line connects the island with Istria and the Merag – Valbiska ferry line connects it with the island of Krk. The ferry ride takes about 20 minutes. The islands of Cres and Lošinj are connected by a bridge. There are two movable bridges on the island that open twice a day to let the vessels pass through: OSOR at 9 a.m. and 5 p.m., PRIVLAKA at 9 a.m. and 6 p.m.

Travelling by bus

Croatia has a good and well-developed national bus network. It includes even the smallest settlements on the coast. The Rijeka - Mali Lošinj bus line operates several times a day, the Zagreb – Mali Lošinj bus line operates twice a day. A direct bus line from Ljubljana is available during the summer months.

Travelling by boat

Catamaran

Throughout the year, the Mali Lošinj - Rijeka – Mali Lošinj line connects the island of Lošinj and the nearby islands with the shore daily. During the summer months, there are additional lines: Mali Lošinj – Pula, Mali Lošinj – Zadar, Mali Lošinj – Rimini/Pesaro and Mali Lošinj – Venice.

Ferryboat

Twice a week there is a ferry line that connects the island with Zadar, and in the summer months it operates every day.

Travelling by plane

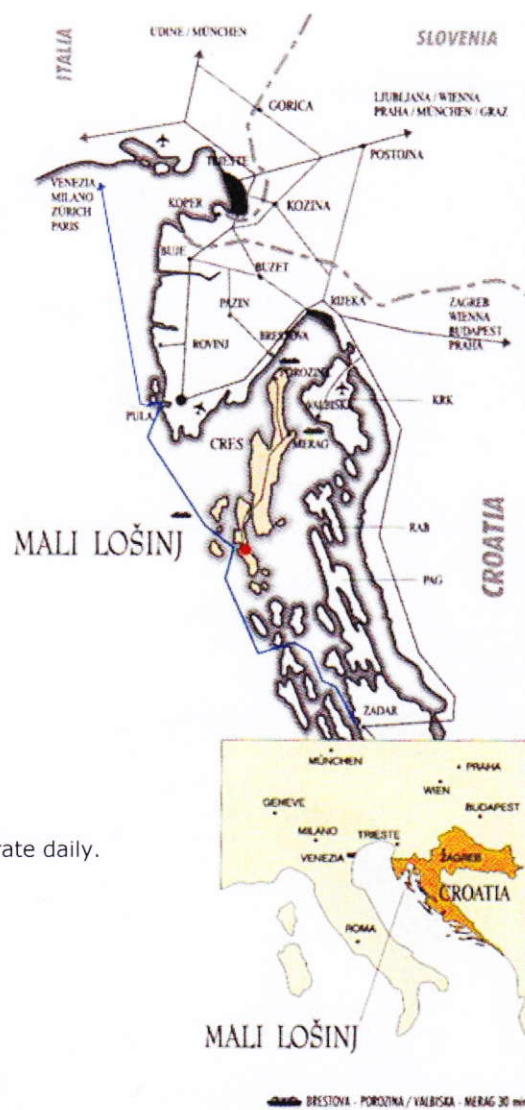
Lošinj's airfield (900 m asphalted runway) is equipped to cater for international traffic (police and customs).

It is the second airport in Croatia by the absolute number of landings (after Zagreb). Aircrafts up to 40 seats can make their landing at this airport (Dash 7 - 8, L - 410 Turbolet, Cessna 150 - 500, King Air 100, King Air 90, King Air 200, Piper and similar types).

The Rijeka Airport is located 80 km from Mali Lošinj.

DISTANCES

Mali Lošinj - Zagreb	254 km
Mali Lošinj - Ljubljana	222 km
Mali Lošinj - Trieste	177 km
Mali Lošinj - Wien	606 km
Mali Lošinj - München	627 km



Ferry routes **Brestova – Porozine** and **Valbiska – Merag** are operate daily.

Travel info: www.hak.hr

MALI LOŠINJ TOURIST BOARD

Riva lošinjskih kapetana 29, HR-51550 Mali Lošinj, tel +385 51 231 884, 231 547

fax +385 51 233 373 e-mail: tzg-mali-losinj@ri.t-com.hr

www.tz-malilosinj.hr

